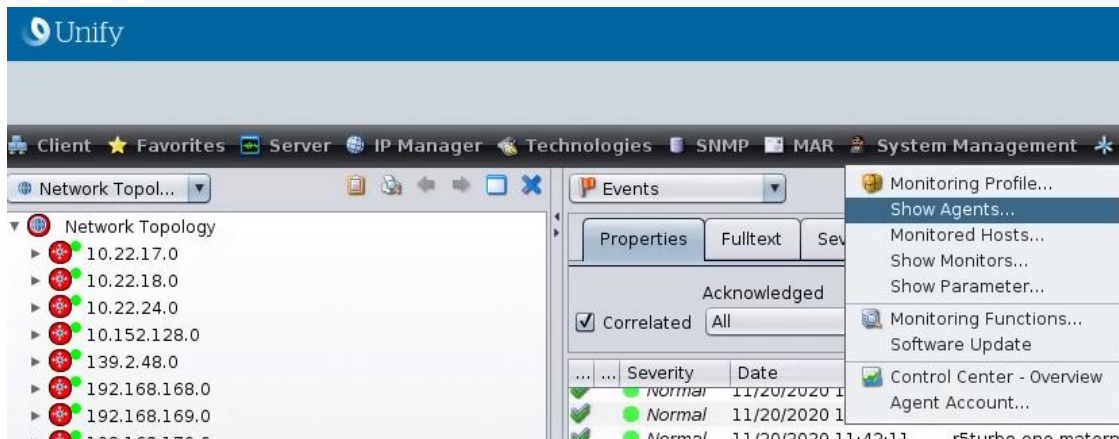


## Monitoring of the uptime of Linux Systems

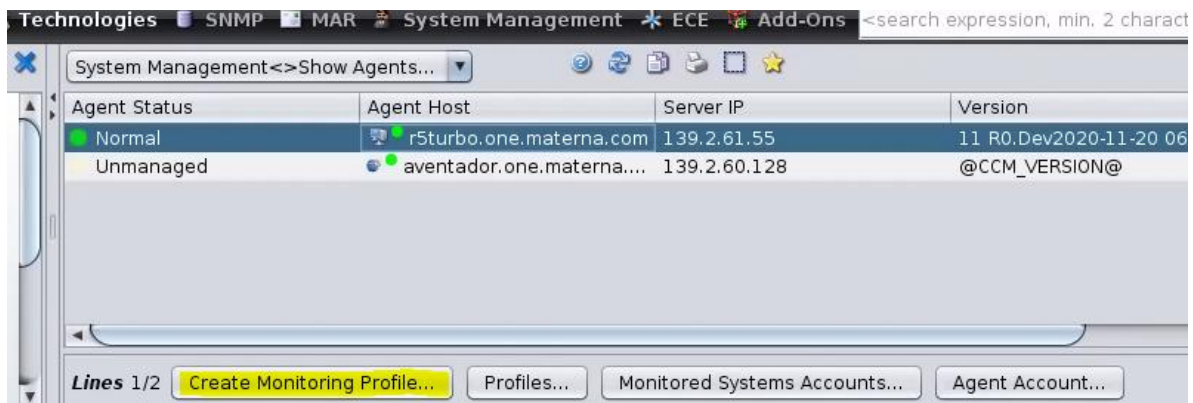
This how-to describes how Linux uptime can be monitored using OpenScope FM (via System Management PlugIn, tested with OSFM V11R0.01.13). Prerequisite is that SSH login on the target system is possible and you have valid account data (username, password).

The first step is the creation and activation of a new monitoring profile to measure the uptime.

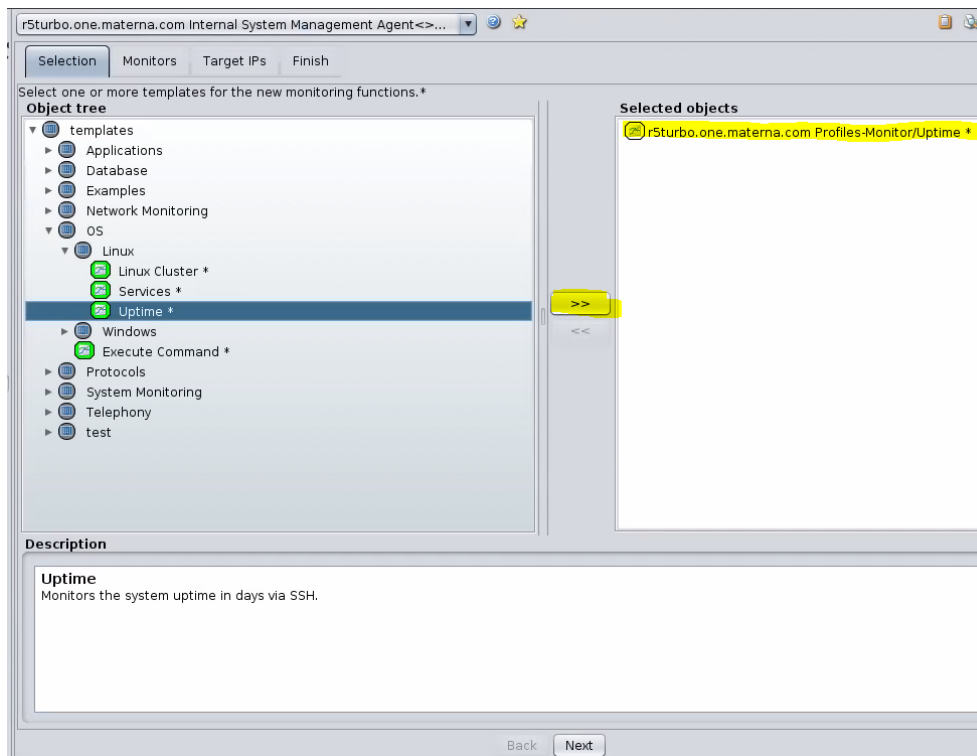
### 1) Show the list of available system management agents



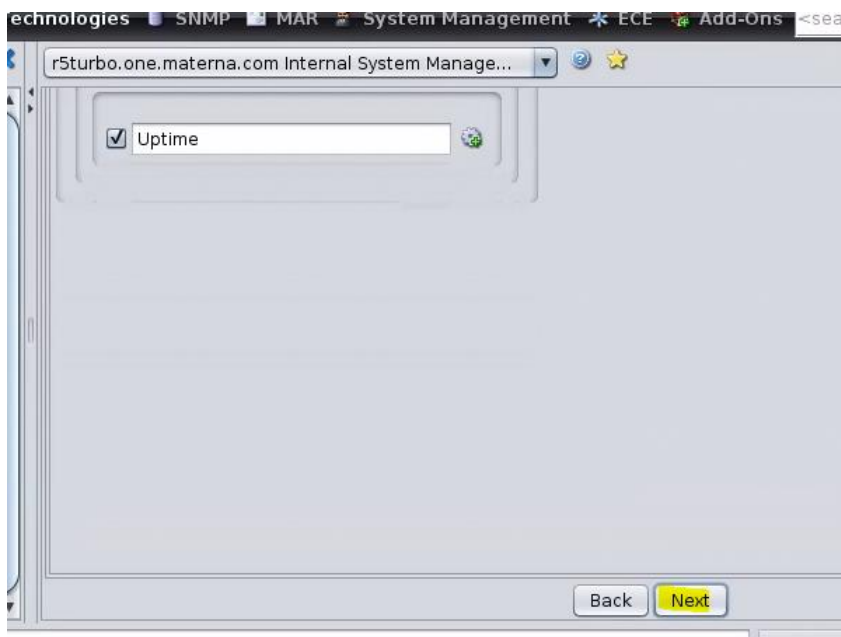
### 2) Select an agent and click on “Create Monitoring Profile”



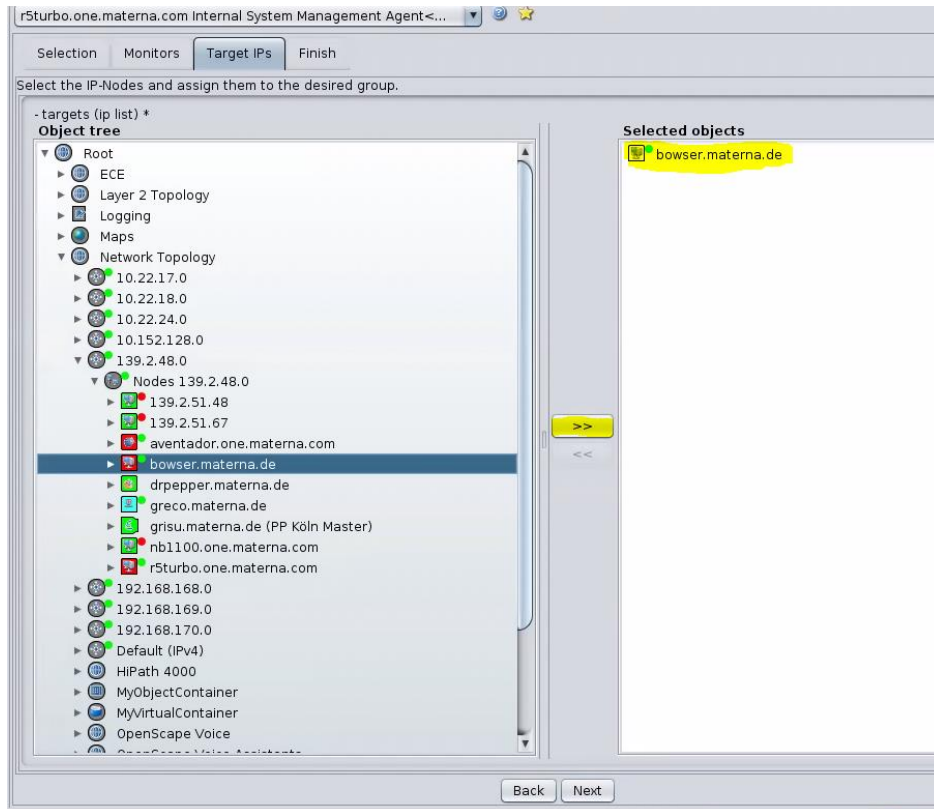
- 3) Select the uptime monitor and move it to the list of selected objects on the right, then click “Next”



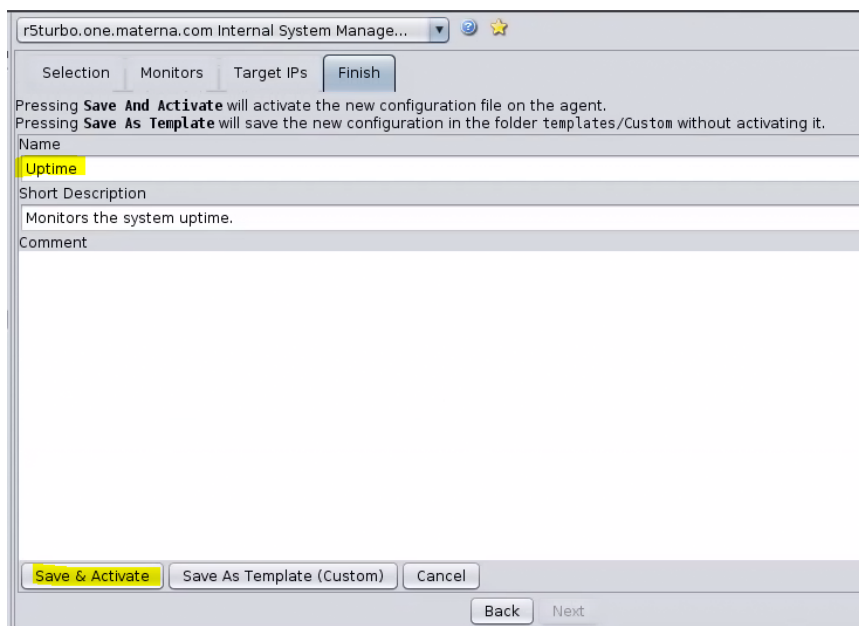
- 4) On this page, just click “Next”



- 5) On the next page, select the system which should be monitored in the tree on the left side. Move it to the list of selected objects on the right



- 6) On the next page, enter a name or just leave the default as it is. The click “Save & Activate”



The next step is the configuration of username and password so that the uptime monitor can access the target system via SSH. To do so, locate the target host you have selected in the previous step 5), in this example the host "bowser.materna.de". An easy way to find it is the global search.

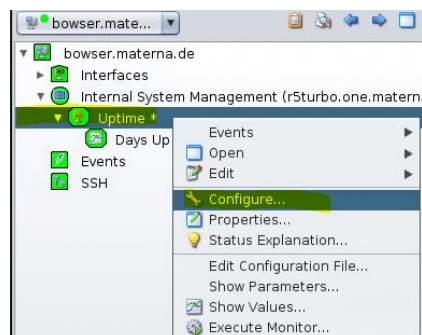
- 1) Locate the host via global search. The row with type "Host" is the object we are looking for:

| Object   | Type            | Internal Object Name               |
|--|-----------------|------------------------------------|
| bowser.materna.de  | Host            | IPNode:139.2.49.114                |
| 3873: IP Manager "bowser.materna.de lo [127.0.0.2]" Link Down, ... | Event           | Event:3873                         |
| 4406: IP Manager "bowser.materna.de lo [127.0.0.2]" Link Down, ... | Event           | Event:4406                         |
| 4407: IP Manager "bowser.materna.de eth0" Link Down, Interface...  | Event           | Event:4407                         |
| bowser.materna.de  | Parameter       | SSMAPParameter:139.2.61.55:3042:De |
| bowser.materna.de  | Parameter       | SSMAPParameter:139.2.61.55:3042:Re |
| bowser.materna.de MIB II   | Parameter       | SSMAPParameter:139.2.61.55:3042:Re |
| bowser.materna.de SNMP   | Parameter       | SSMAPParameter:139.2.61.55:3042:Re |
| bowser.materna.de SSH  | Parameter       | SSMAPParameter:139.2.61.55:3042:Re |
| Interface-0 <-> bowser.materna.de                                  | Meta Connection | Meta:TMExternal:127.0.0.1:52555:56 |
| Interface-1 <-> bowser.materna.de                                  | Meta Connection | Meta:TMExternal:127.0.0.1:52555:56 |

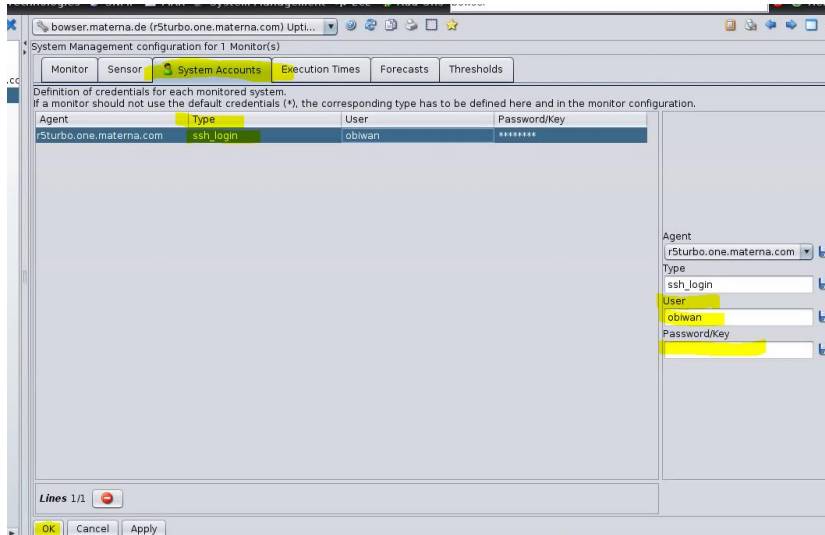
- 2) Right-Click on the host entry and select "Open->Tree" to show the host and it's sub-components on the left side

| Object                  | Type      | Internal Object Name               |
|-------------------------|-----------|------------------------------------|
| bowser.materna.de       | Host      | IPNode:139.2.49.114                |
| 3873: IP Manager "bowse | Event     | Event:3873                         |
| 4406: IP Manager "bowse | Event     | Event:4406                         |
| 4407: IP Manager "bowse | Event     | Event:4407                         |
| bowser.materna.de       | Parameter | SSMAPParameter:139.2.61.55:3042:De |

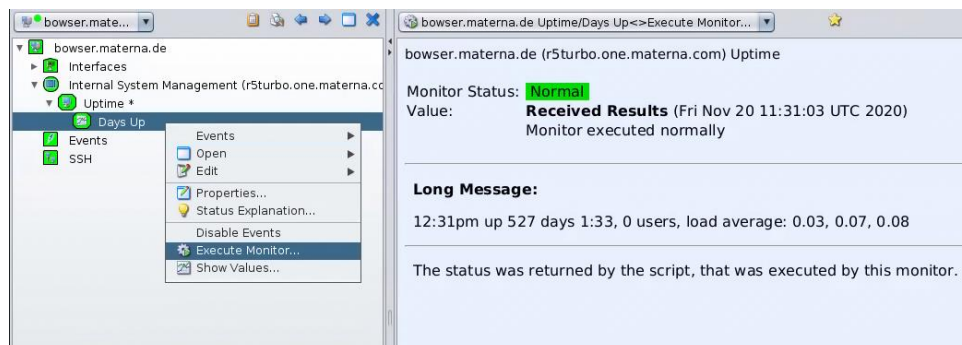
- 3) The newly configured monitoring should already be shown. Locate the uptime monitor and click on "Configure"



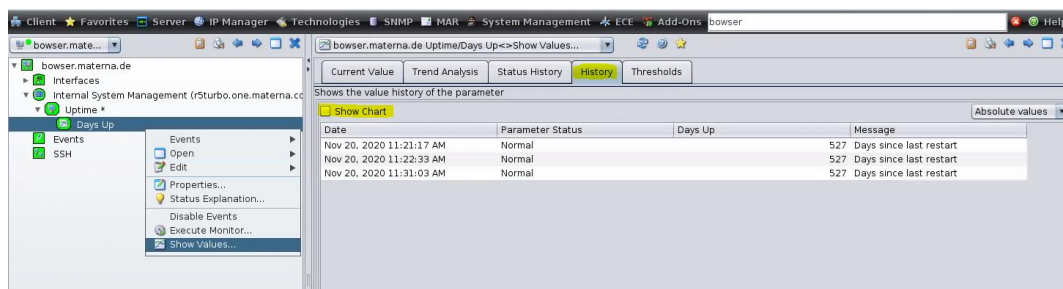
- 4) Navigate to the tab “System Accounts”, select the row of type “ssh\_login” and enter username and password. Then, click the OK button.



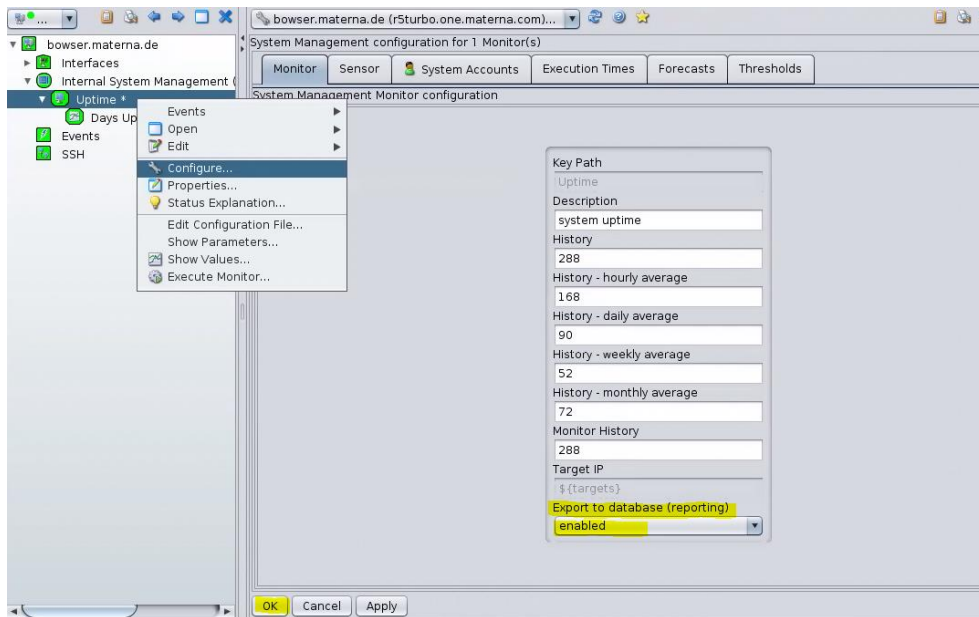
The configuration is now complete. You can check if it is working by right clicking the monitor and selecting “Execute Monitor”. It should show something like this:



You can also display the history of measured values by selecting “Show Values”. Navigate to the tab “History” and disable the “Show Chart” option to see the text values instead of the graph:



If you want to have the data available for the generation of PDF reports, right-click on the uptime monitor and switch “Export to database” to “enabled” and click the OK button



Reports can now be created via the Web UI as shown in the screen shot:

