

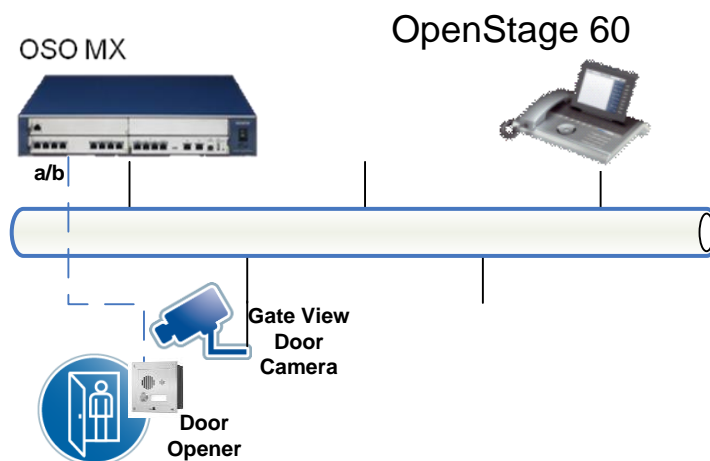
Configuration Example of OpenStage Gate View in combination with an analog Door Opener in OpenScape Office MX and OpenScape Business X3, X5, X8.

OpenStage Gate View works in combination with an analogue Door Opener attached to an OpenScape Office MX and OpenScape Business X3, X5, X8 so that a Gate View Door Camera is automatically displayed on the OpenStage phone display when the doorbell is activated. The user then can look through the camera the visitor at the Door and decide whether or not to allow his entrance into the building by activating the configured button on his phone.

Door Opener for Gate View configuration is completed in 4 steps:

- Door Opener Configuration in “Setup - Wizards - Telephones / Subscribers - Analog Terminals” or in “Expert Mode – Station – Analog Station”
- Configure “Open Door” key on specified ring destination (Subscriber needs also to have Gate View configured)
- Change Door Opener password in “Expert Mode – UC Suite – User Directory”
- Configure Door Opener in OpenStage Gate View “Expert Mode – OpenStage Gate View – Administration – Door Opener – Add Door Opener”

In detail:



Precondition

The analog Door Opener port has to be granted with UC access (UC Suite or UC Smart) accompanied with the respective license.

1st step is to connect the analogue Door Opener at the door to an OpenScape Office MX/ OpenScape Business X3, X5, X8 analogue port. Upon that, analogue Door Opener should be configured at “Expert Mode – Station – Analog Station” with Device Type “Analog” or “Door Station” [Figure 1](#)

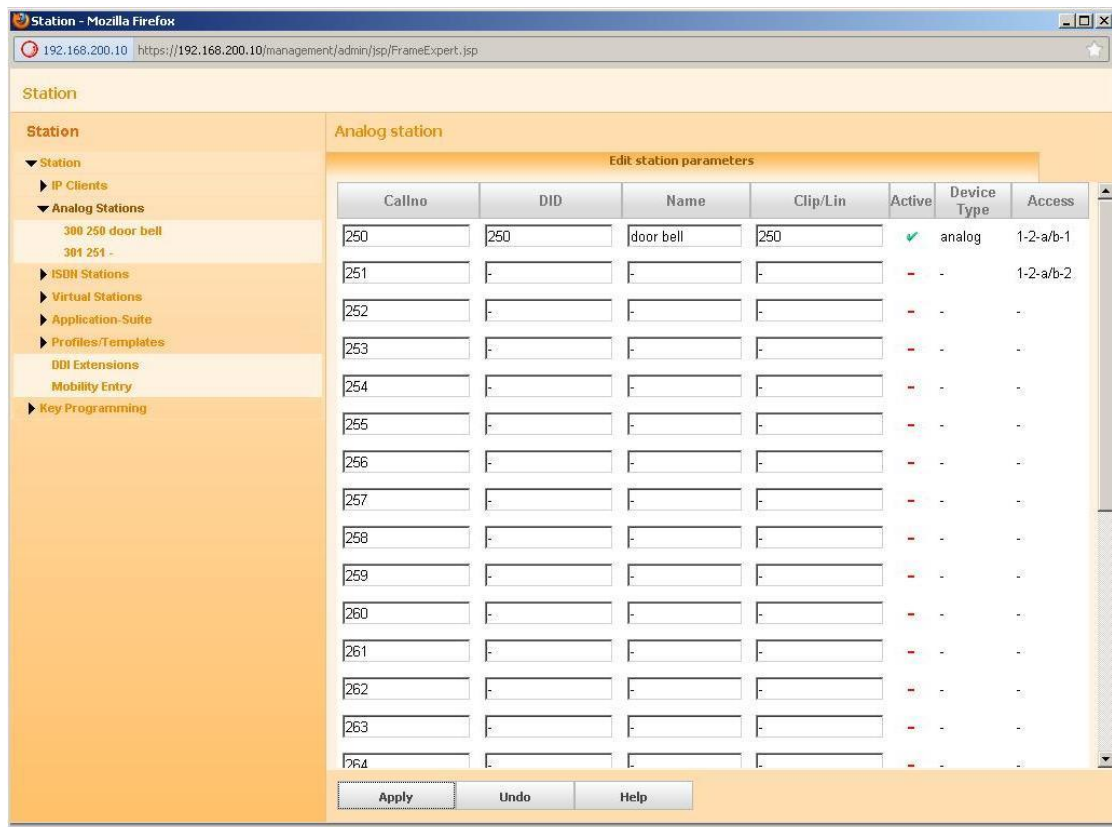


Figure 1: Door Opener is configured with number 250 and name door bell.

Following, Door Opener should be associated with a ring Destination at “Auxiliary Equipment – Door Opener”. Ring destination should have Gate View installed and configured [Figure 2](#).

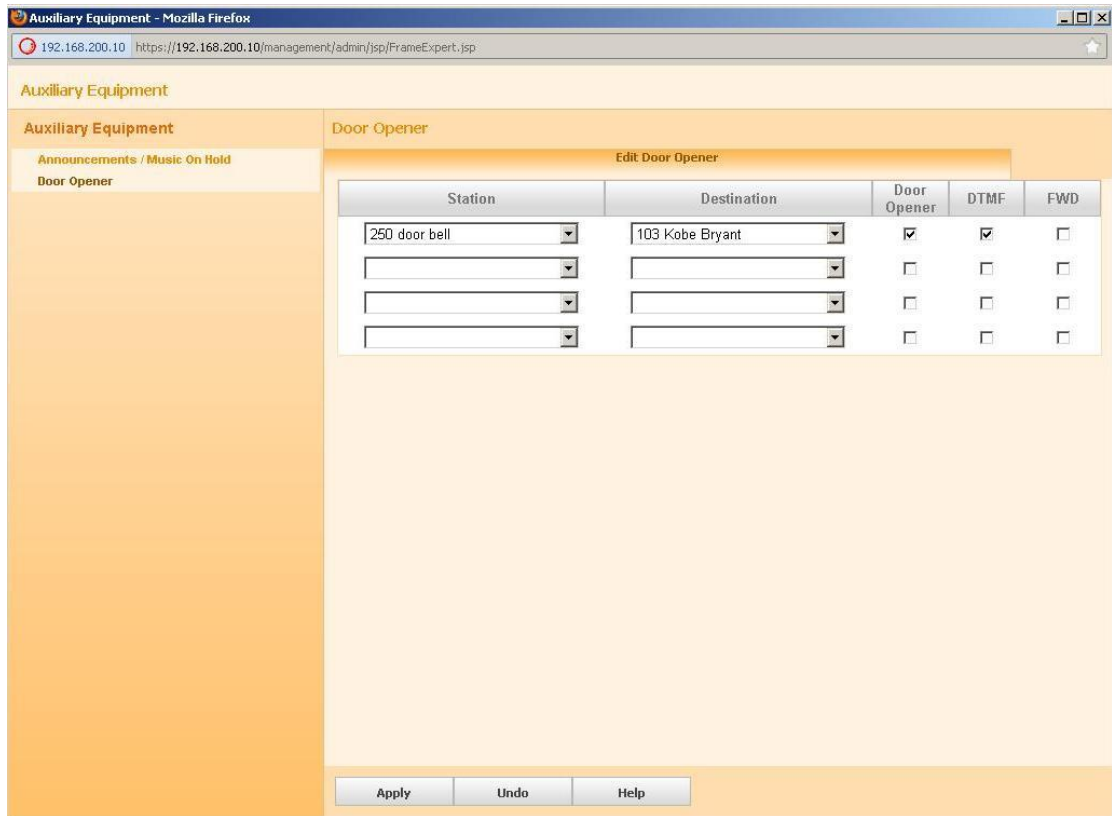


Figure 2: Door Opener 250 will ring on Station 103 when activated.

For security reason the UC password for the door opener needs to be set

In order to allow Ring Destination to open the door when the door opener is activated on user pressing the door bell, a key for opening the door should be configured at Ring Destination [Figure 3](#) , [Figure 4](#) .

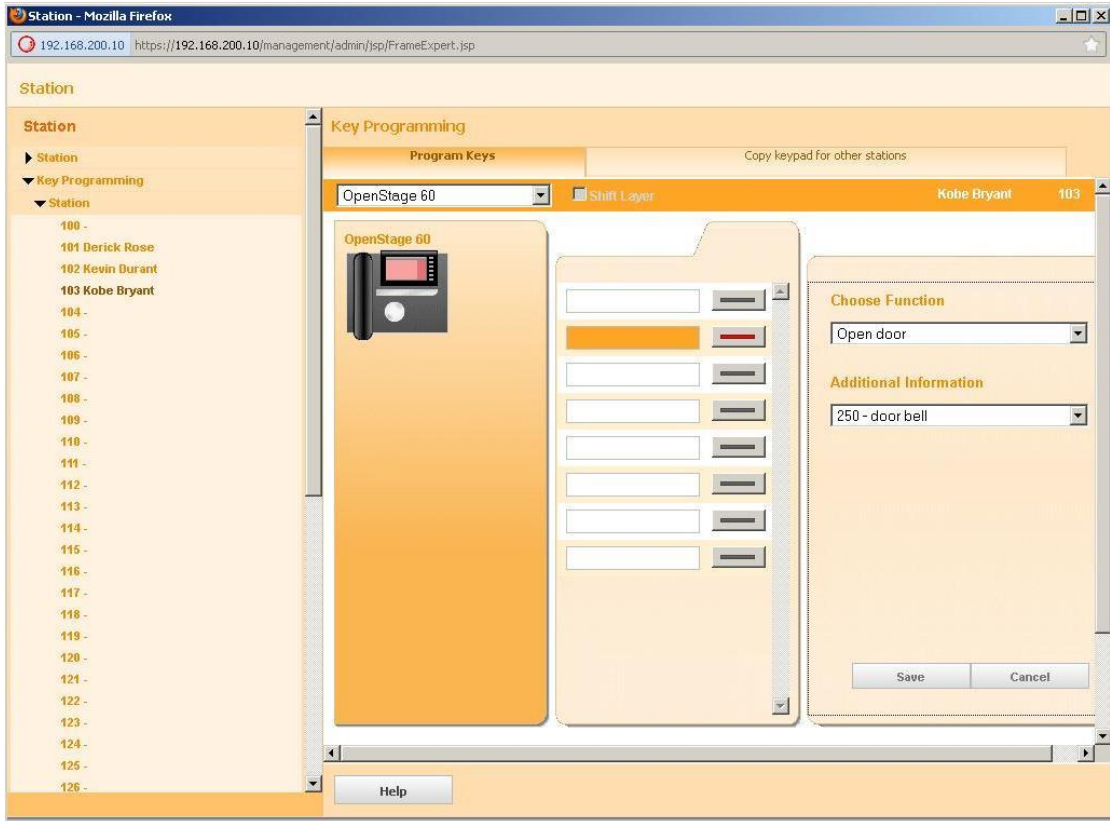


Figure 3: For Ring Destination 103, 2nd key is configured to open the door when 250 door bell is rang.

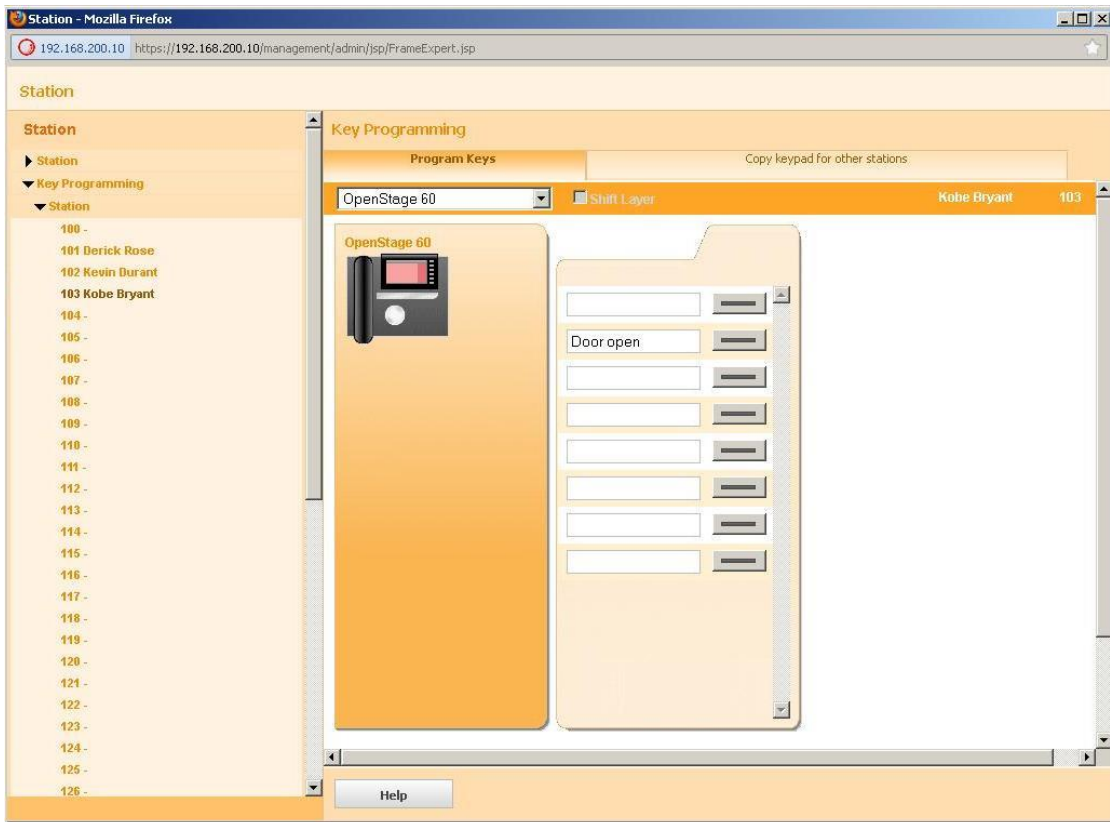


Figure 4: 2nd Key of Ring Destination 103 is now Saved as Door Open.

Final step is to configure the Door Opener within OpenStage Gate View from “Expert Mode – OpenStage Gate View – Administration – Door Opener – Add Door Opener” [Figure 5](#).

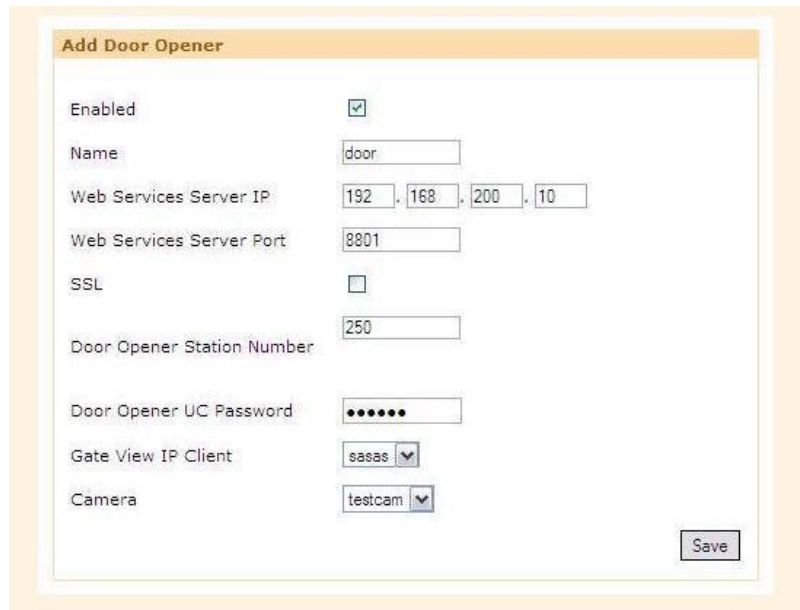


Figure 5: “Add Door Opener” menu in OpenStage Gate View

Enabled: When selected Door Opener feature is activated.

Name: Desired name for Gate View configured Door Opener.

Web Services Server IP: IP address of UC Suite/myPortal entry Web Services Assistant.

Web Services Server Port: Port of myPortal entry Web Services Assistant.

SSL: SSL access.

Door Opener Station Number: Door Opener Station Number.

Door Opener UC Password: Door Opener UC password as was configured **Fehler! Verweisquelle konnte nicht gefunden werden..**

Gate View IP Client: Ring Destination with Gate View configured, “Gate View Door Camera” and “Open Door” keys.



Camera: Installed Gate View camera located at the door.

Upon Saving Door Opener installation at OpenStage Gate View, when Door Opener is activated, Gate View keys need to be transferred once more [Figure 6](#) to the OpenStage phone and then Door camera will automatically be switched on Ring destination and User will have the option to open the door by pressing “Door Open” key.

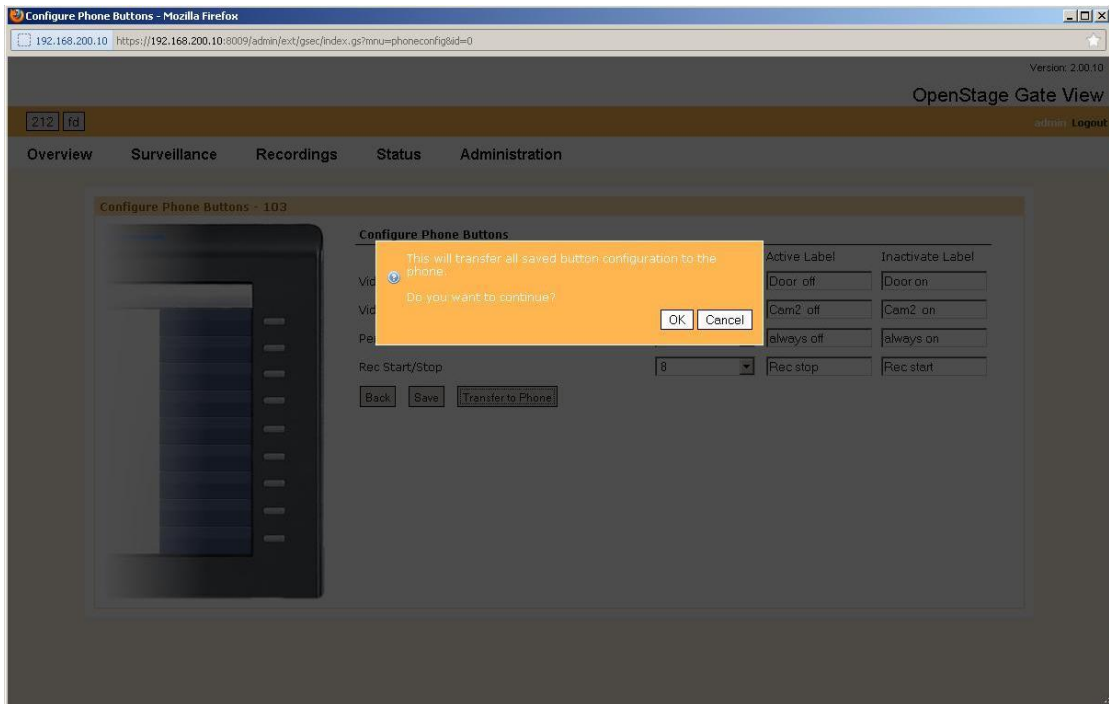


Figure 6: Transfer to Phone Gate View configured buttons.