



OpenScape Business V2

How To:

SIP trunk Configuration for CLIP no Screening

Version 1.0

Definitions

HowTo

An OpenScape Business HowTo describes the configuration of an OpenScape Business feature within the OpenScape Business administration. It addresses primarily trained administrators of OpenScape Business.

Tutorial

Within the OpenScape Business tutorials procedures for installation, administration and operation of specific devices, applications or systems, which are connected to OpenScape Business, are described. The tutorial addresses primarily trained administrators of OpenScape Business.

Table of Contents

1. CLIP no screening feature	4
1.1. CLIP no screening - outgoing call	4
1.2. CLIP no screening - forwarded calls	4
2. Configuration	5
2.1. CLIP outgoing call for Free- and/or Mobil call numbers	5
2.1.1. Call number configuration	5
2.1.2. ITSP Configuration	7
2.2. CLIP forwarded calls	8

Table of History

Date	Version	Changes
2015-10-10	1.0	Initial Version

1. CLIP no screening feature

The CLIP no Screening feature is used for different call scenarios. It allows the transport

1. Of a caller number deviating from the DID number (caller ID, calling party number) for outgoing calls
2. Of the original caller number in case of forwarded calls

As a general rule CLIP no Screening has to be requested at your ITSP. As not all ITSP's support this feature, please check the feature description of your ITSP for additional information.

The CLIP no Screening feature is available for DID based ITSP trunks only.

1.1. CLIP no screening – outgoing call

When using the CLIP no screening feature the user has to follow local law and regulation. In most cases the use of caller numbers in call signaling is limited to numbers assigned to the used SIP trunk or to numbers assigned to the user.

Such call numbers are e.g.

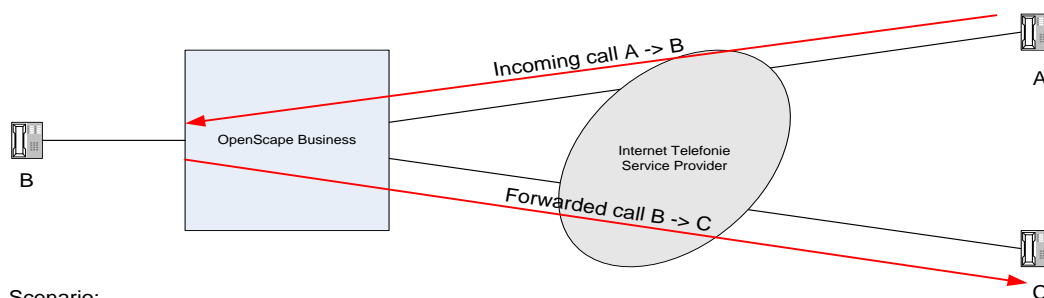
- All call numbers assigned to the used access
- Free call numbers (0800...)
- Mobile call numbers

OpenScape Business supports the transport of CLIP information in the From: header field in parallel to the transmission of an "trusted" number in the P-Asserted-Identity header field:

```
INVITE sip:+49171987654@sip-trunk.de;user=phone;transport=tcp SIP/2.0
From: <sip:+49800123456@sip-trunk.de;user=phone>;tag=2cea5a7018
To: <sip:+49171987654@sip-trunk.de;user=phone>
P-Asserted-Identity: <sip:+49894711300@sip-telekom.de;user=phone>
```

1.2. CLIP no screening – forwarded calls

CLIP no screening can be used to transport the original caller number (A) to the call forwarding target C (call forwarding initiated by the system)



Scenario:
A calls B
B has call forwarding to C

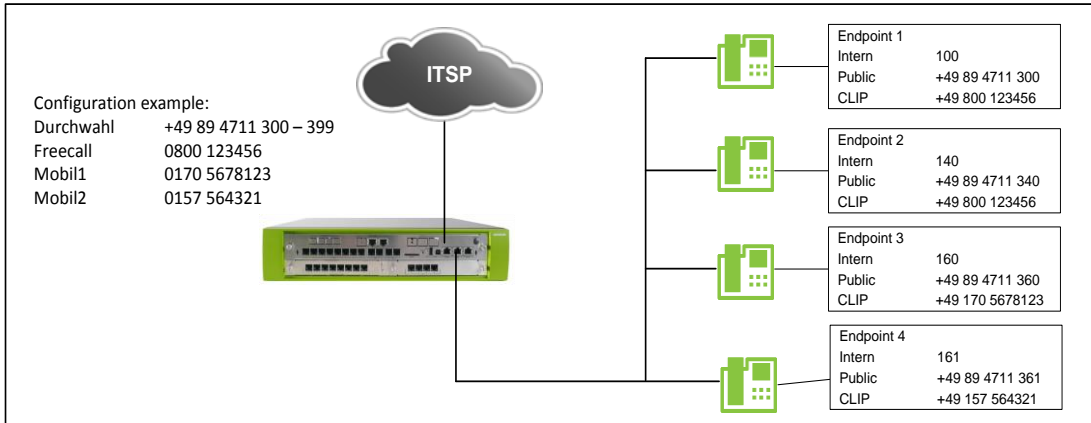


The use of CLIP no screening in this scenario may be prohibited by legal restriction.
A clarification with your ITSP is necessary before this feature is used.

2. Configuration

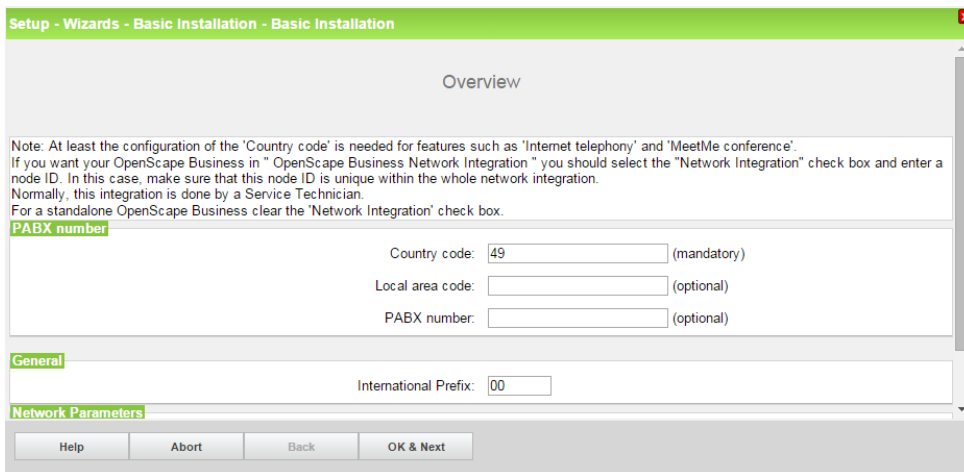
2.1. CLIP outgoing call for Free- and/or Mobil call numbers

2.1.1. Call number configuration

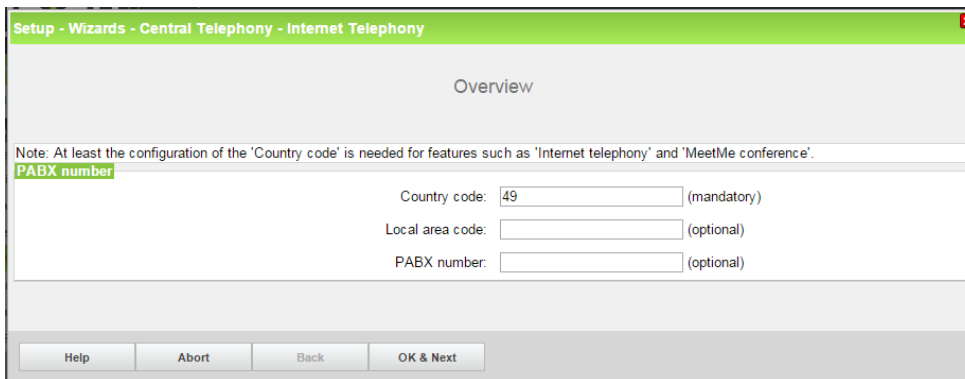


When using a DID based ITSP the call number configuration is defined by the Gateway location / PABX number together with the call numbers defined for the station.

The Gateway location will be configured in the Basic Installation Wizard



Or in the Internet Telephony Wizard:



In case that Free- and/or mobile call numbers shall be used in parallel with the numbers assigned to the ITSP trunk, ONLY the Country code must be entered a location. The Local area code and the PABX number MUST be left empty.

The remaining call number information has to be filled in the Telephony/Subscriber Wizard.
 CallNo/Name: the internal call number and name of the station
 DID: the number to reach the station from the public network (via ITSP trunk)

Setup - Wizards - Telephones / Subscribers - IP Telephones

Select a station -LAN Phones/WLAN Phones

Take DID from changed call number

Box	Slot	CallNo	Name	DID	Type	Fax CallNo
-	-	-	-	-	No Port	-
1	0	140	Alice	894711340	System Client	-
1	0	-	-	-	No Port	-
-	-	-	-	-	No Port	-
-	-	160	Bob	894711360	SIP Client	-
-	-	161	Charly	894711361	SIP Client	-
-	-	-	-	-	No Port	-

Page 2 of 20

Help Abort Back OK & Next Save Data

For entering the CLIP number the "Change Station"  page has to be opened

Setup - Wizards - Telephones / Subscribers - IP Telephones

Change Station

Station

Name: Alice
 (for Subscriber):

Call number: 140

Direct inward dialing: 894711340
 (Number for Direct Inward Dialing)

Mobility

Mobile Call number: -

Web Feature ID: None

direct inward dialing for Internet Telephony

1-Telekom All-IP Trunk R

Parameter

Type: System Client

Device Type: OpenStage 60/80

Clip/Lin: 800123456

Help Abort Back OK & Next

This has to be done for all stations in a similar manner.

- If no CLIP is assigned, the DID number will be used as calling number for outgoing calls.
- If no CLIP/DID is assigned to a station the CLIP/DID of the Intercept position will be used instead.
- If none of these numbers is configured the Default number assigned to the ITSP trunk will be used.

Entering the CLIP number is possible in Expert mode as well:

Expert mode - Telephony Server

Station

- Station
 - UP0 Stations
 - IP Clients
 - Analog Stations
 - ISDN Stations
 - DECT Stations
 - IVM/EVM Ports
 - Virtual Stations
 - UC Applications
 - Profiles/Templates
 - DDI Extensions
 - Mobility User

IP Clients

Edit Subscriber

CallNo	DID	Name	Type	Clip/Lin
Search:				
-	-	-	No Port	-
140	894711340	Alice	System Client	800123456
-	-	-	No Port	-
160	894711360	Bob	No Port	1705678123
161	894711361	Charly	No Port	157564321
-	-	-	No Port	-

2.1.2. ITSP Configuration

The CLIP no Screening feature is available for DID based ITSP trunks only. When configuring the Internet Telephony Station “use public number (DID)” MUST be selected:

Internet Telephony Station for ITSP-With-CLIP

Internet telephony station: +498947113
Authorization name: unifyregister
Password:
Confirm Password:

Call number assignment

Use public number (DID) Use public number (DID)
 Use internal number (Callno) / Single entries
 Use internal number (Callno) / Range entry

If using 'configurable clip' you have to change the configuration to 'Use public number (DID)' here!
Changing trunk parameters in case of internal subscriber no. is not allowed!

Default Number: +49894711300
MEX Number:

Default Number
ITSP as primary CO access
Enter one of the call numbers supplied by your network provider here. This will be used in outgoing calls as the calling party number in case no other number is available for the respective call.
All call numbers supplied by your network provider are to be entered within the trunk and telephones configuration (DID field) primary CO access.

MEX Number
To use the feature Mobile Extension (MEX) you have to enter a MEX number here. An entered MEX number will only be stored if the ITSP is marked as 'active'.
For use of MEX it is also necessary to configure a DISA number.

Help Abort Back OK & Next Delete Data

In the “Default number” field a valid call number must be entered, which is used as a “trusted caller number” in the P-Asserted-Identity header field (e.g. intercept position DID number),

“CLIP no Screening support” has to be configured for the transmission of the default DID in the P-Asserted-Identity header field:

Call number formatting

Incoming call - Called party number: request line
Incoming call - Calling party number: From header user part
Incoming call - Type of number (calling): automatic
Incoming call - Type of number (called): automatic
Outgoing call - Type of number (calling): automatic
Mapping of provider number: off
CLIP no Screening support: CLIP in From / trusted number in PAI
Call No. with international/national prefix: no

Example for the call number usage in an outgoing INVITE Message:

```
INVITE sip:gewähltesZiel@sip-trunk.de;user=phone;transport=tcp SIP/2.0
From: <sip:CLIP@sip-trunk.de;user=phone>;tag=2cea5a7018
To: <sip: gewähltesZiel@sip-trunk.de;user=phone>
P-Asserted-Identity: <sip:StandardRufnummer@sip-telekom.de;user=phone>
```

2.2. CLIP forwarded calls

To make use of this feature your ITSP must support the transmission of the A-callnumber in the From: header field.

For certified ITSP's this setting is already available in the ITSP profile stored in the OpenScape Business system.

In all other cases the parameter "Diversion: From contains original CallingPartyNumber" MUST be set.

If the ITSP supports the diversion header field, the "CLIP outgoing in Diversion header" parameters should be set to the specification of your ITSP.

Extended SIP Provider Data

Show Extended SIP Provider Data:

Attention: the following parameters are used to adapt the behavior of the SIP stack to a certain provider implementation. These parameters are defined during the certification process for the provider. Changing these parameters may result in a malfunction of the provider interface.

CLIP / CLIR

CLIP outgoing in From header - display part: omit ▼

CLIP outgoing in From header - user part: call number ▼

Outgoing From Header - domain/host part: Domain Name ▼

Diversion: From contains original CallingPartyNumber:

Diversion: PAI contains original CallingPartyNumber:

CLIP outgoing in P-Asserted-Id header - display part: omit ▼

CLIP outgoing in P-Asserted-Id header - user part: call number ▼

CLIP outgoing in P-Preferred-Id header - display part: omit ▼

CLIP outgoing in P-Preferred-Id header - user part: omit ▼

CLIP outgoing in Diversion header - display part: omit ▼

CLIP outgoing in Diversion header - user part: call number ▼

About Unify

Unify is one of the world's largest communications software and services firms. Our solutions unify multiple networks, devices and applications into one easy-to-use platform that allows teams to engage in rich and meaningful conversations. The result is a transformation of how the enterprise communicates and collaborates that amplifies collective effort, energizes the business, and dramatically improves business performance. Born out of the engineering DNA of Siemens, Unify builds on this heritage of product reliability, innovation, open standards and security to provide integrated communications solutions for 75% of the Global 500.

Unify is a joint venture of The Gores Group and Siemens AG.

unify.com



Copyright © Unify Software and Solutions GmbH & Co. KG 2015
Mies-van-der-Rohe-Str. 6, 80807 Munich/Germany
All rights reserved.

The information provided in this document contains merely general descriptions or characteristics of performance which in case of actual use do not always apply as described or which may change as a result of further development of the products. An obligation to provide the respective characteristics shall only exist if expressly agreed in the terms of contract.

Availability and technical specifications are subject to change without notice.

Unify, OpenScape, OpenStage and HiPath are registered trademarks of Unify Software and Solutions GmbH & Co. KG. All other company, brand, product and service names are trademarks or registered trademarks of their respective holders.

UNIFY Harmonize
your enterprise