



OpenScape Business V1 OpenScape Office V3

Gate View

How to configure for SIP door opener

Version 1.0

Table of Contents

Table of History

Date	Version	Changes
2015-01-21	1.0	Initial Creation

OpenStage Gate View works in combination with a SIP door opener and camera attached to OpenScape Office and OpenScape Business. Images of the door camera are automatically displayed on the display of the OpenStage phone when the doorbell is activated. The user is thus possible to identify the visitor and can decide whether or not to allow entrance into the building by pressing a pre configured button on the phone.

Door Opener for Gate View configuration is completed in 3 steps:

- Configure a programmable key with the function “Open Door” on the phone which receives the calls from the SIP Door Opener (subscriber also needs also to have Gate View configured)
- Change the Door Opener password in “Expert Mode – UC Suite – User Directory. Configure Door Opener in OpenStage Gate View “Expert Mode – OpenStage Gate View – Administration – Door Opener – Add Door Opener”

In detail:

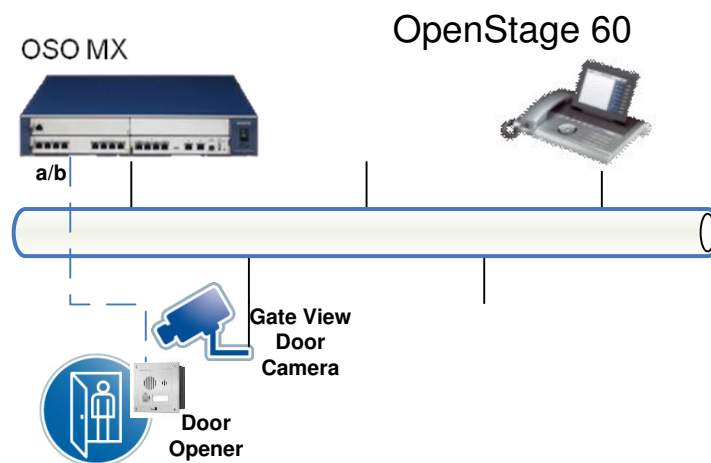


Figure 1: Door Opener 250 will ring on Station 103 when activated.

For security reasons the UC password for the door opener needs to be set. In order to allow extensions to open the door, when the door opener is activated (user pressing the door bell), a key for opening the door must be configured on the phone which has been selected to receive calls from the door opener.

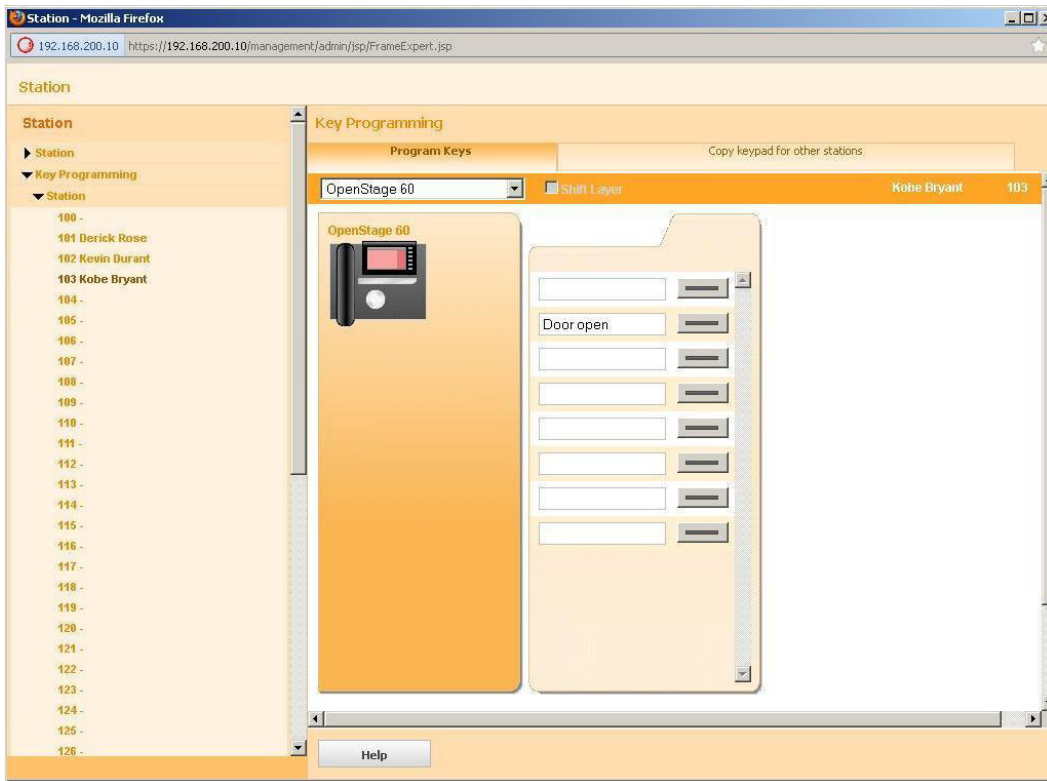


Figure 2: 2nd Key has to be configured as “Procedure *53nnnn” in order to open the door via DTMF nnnn.

The final step is to configure the Door Opener within OpenStage Gate View from “Expert Mode – OpenStage Gate View – Administration – Door Opener – Add Door Opener” **Fehler! Verweisquelle konnte nicht gefunden werden..**

Figure 3: “Add Door Opener” menu in OpenStage Gate View

Enabled: When selected Door Opener feature is activated.

Name: Desired name for Gate View configured Door Opener.

Web Services Server IP: IP address of UC Suite/myPortal entry Web Services Assistant.

Web Services Server Port: Port of myPortal entry Web Services Assistant.

SSL: SSL access.

Door Opener Station Number: Door Opener SIP Station Number.

Door Opener UC Password: Door Opener UC password that was configured.

Gate View IP Client: Ring Destination (phone which receives calls from door opener) with Gate View configured, “Gate View Door Camera” and “Open Door” keys.



Camera: Installed Gate View camera located at the door.

After saving the Door Opener installation at OpenStage Gate View and activating the Door Opener, the Gate View keys need to be transferred once more to the OpenStage phone. The door camera will then automatically be activated and the video images shown on the display of the configured phone (ring destination). Users have the option to open the door by pressing the “Door Open” key.

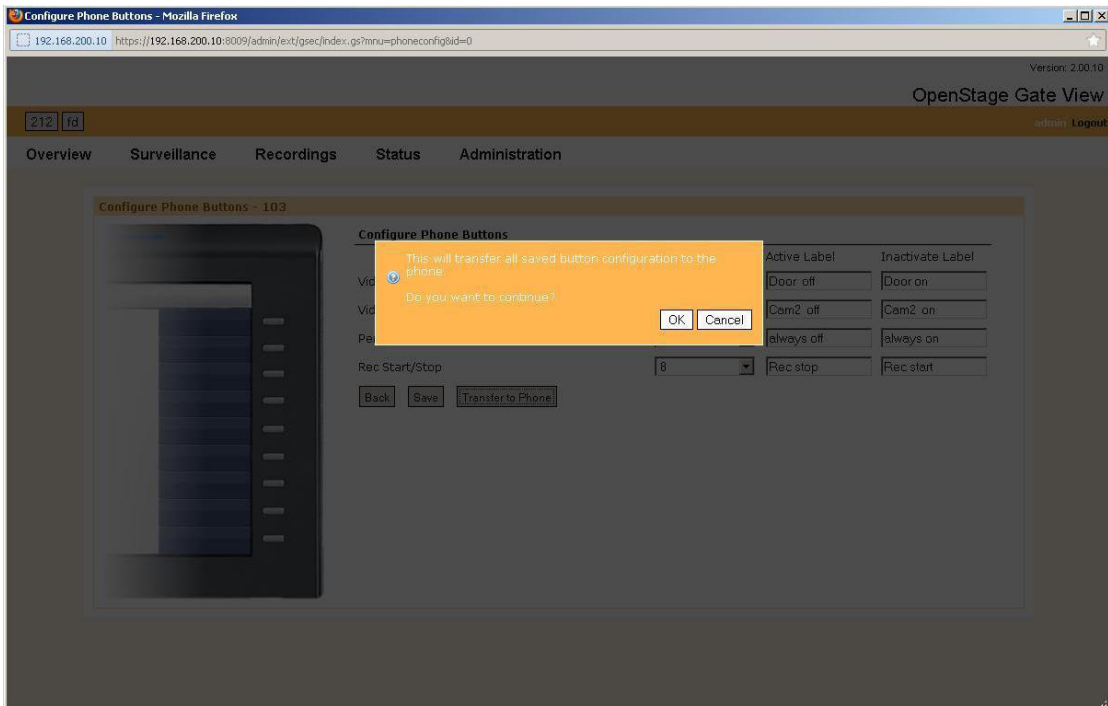


Figure 5: Transfer to Phone Gate View configured buttons.

About Unify

Unify is one of the world's leading communications software and services firms, providing integrated communications solutions for approximately 75 percent of the Fortune Global 500. Our solutions unify multiple networks, devices and applications into one easy-to-use platform that allows teams to engage in rich and meaningful conversations. The result is a transformation of how the enterprise communicates and collaborates that amplifies collective effort, energizes the business, and enhances business performance. Unify has a strong heritage of product reliability, innovation, open standards and security.

Unify.com

Copyright © Unify Software and Solutions GmbH & Co. KG 2015
Mies-van-der-Rohe-Str. 6, 80807 Munich/Germany
All rights reserved.

The information provided in this document contains merely general descriptions or characteristics of performance which in case of actual use do not always apply as described or which may change as a result of further development of the products. An obligation to provide the respective characteristics shall only exist if expressly agreed in the terms of contract.

Availability and technical specifications are subject to change without notice.

Unify, OpenScape, OpenStage and HiPath are registered trademarks of Unify Software and Solutions GmbH & Co. KG. All other company, brand, product and service names are trademarks or registered trademarks of their respective holders.

UNIFY Harmonize
your enterprise