



A MITEL
PRODUCT
GUIDE

OpenScape Business V3

SIP Trunk configuration

CLIP no Screening (CNS)

Release Number 09/2024

Contents

1 CLIP no Screening	4
1.1 CLIP no Screening – outgoing call	4
1.2 CLIP no Screening – forwarded calls.....	4
2 Configuration	5
2.1 CLIP outgoing call for Free- and/or Mobil call numbers.....	5
2.1.1 Call number configuration.....	5
2.1.2 ITSP Configuration.....	7
2.2 CLIP forwarded calls.....	9

History of Changes

Date	Issue	Summary
10.10.2015	1.0	initial version
16.09.2024	1.1	editorial changes

Note: The basis for this document is the current OpenScape Business at the time of certification. Since OpenScape Business is constantly developed, input masks and interfaces as well as requirements may change in the future. The settings and entries described here then apply accordingly.


Comments and corrections are welcome, please contact: osbiz-certification@mitel.com

1 CLIP no Screening

The CLIP no Screening (CNS) feature is used for different call scenarios. It allows the transport of

- a caller number deviating from the DID number (caller ID, calling party number) for outgoing calls
- the original caller number in case of forwarded calls

As a general rule CLIP no Screening has to be requested at your ITSP. As not all ITSP's support this feature, please check the feature description of your ITSP for additional information.

	The CLIP no Screening feature is available for DID based ITSP trunks only.
-----------------------------------------------------------------------------------	----------------------------------------------------------------------------

1.1 CLIP no Screening – outgoing call

When using the CLIP no Screening feature the user has to follow local law and regulation. In most cases the use of caller numbers in call signaling is limited to numbers assigned to the used SIP trunk or to numbers assigned to the user.

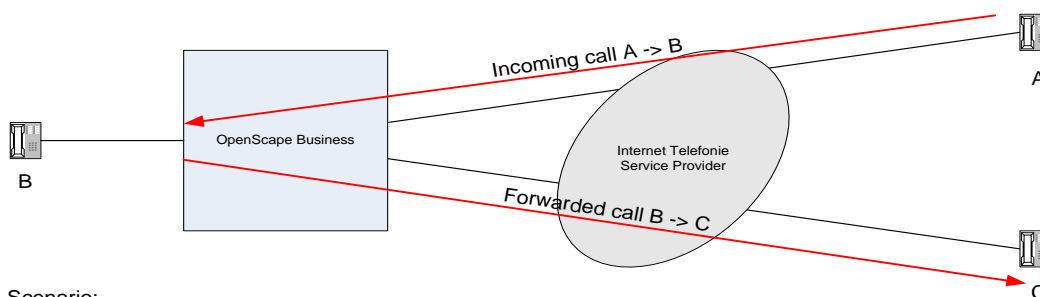
Such call numbers are e.g.

- all call numbers assigned to the used access
- Free call numbers (0800...)
- Mobile call numbers


OpenScape Business supports the transport of CLIP information in the From header field in parallel to the transmission of an "trusted" number in the P-Asserted-Identity header field.

1.2 CLIP no Screening – forwarded calls

CLIP no Screening can be used to transport the original caller number (A) to the call forwarding target C (call forwarding initiated by the system).



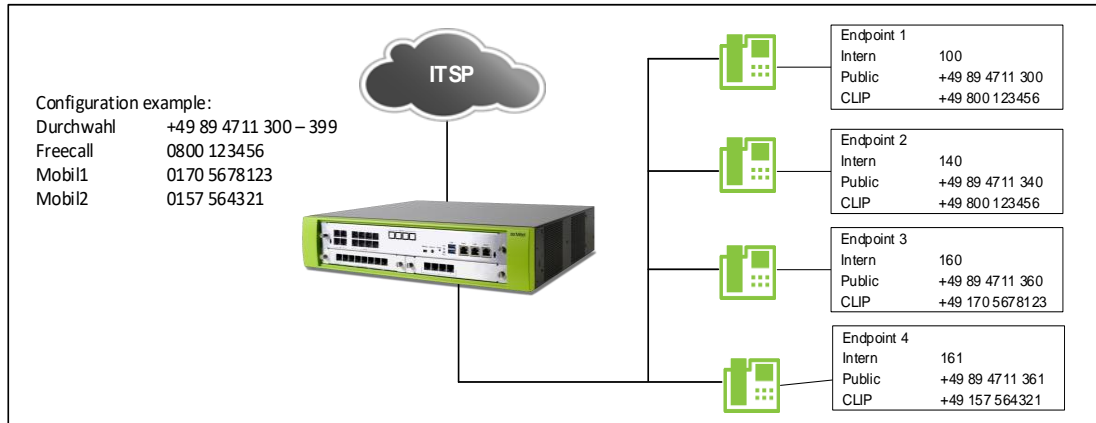
Scenario:
A calls B
B has call forwarding to C

	The use of CLIP no Screening in this scenario may be prohibited by legal restriction. A clarification with your ITSP is necessary before this feature is used.
-------------------------------------------------------------------------------------	-------------------------------------------------------------------------------------------------------------------------------------------------------------------

2 Configuration

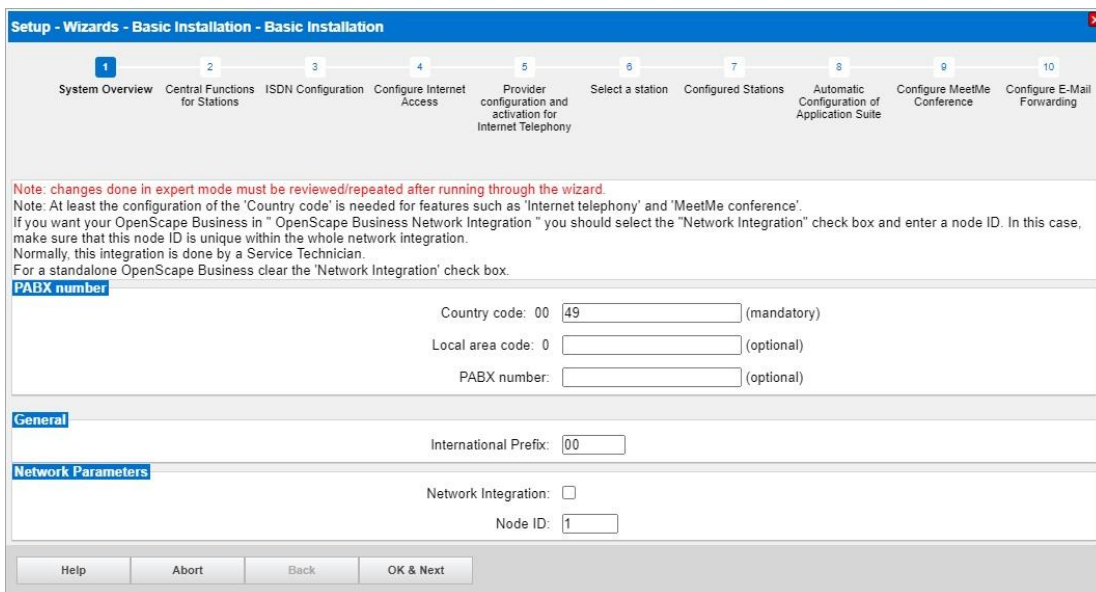
2.1 CLIP outgoing call for Free- and/or Mobil call numbers

2.1.1 Call number configuration

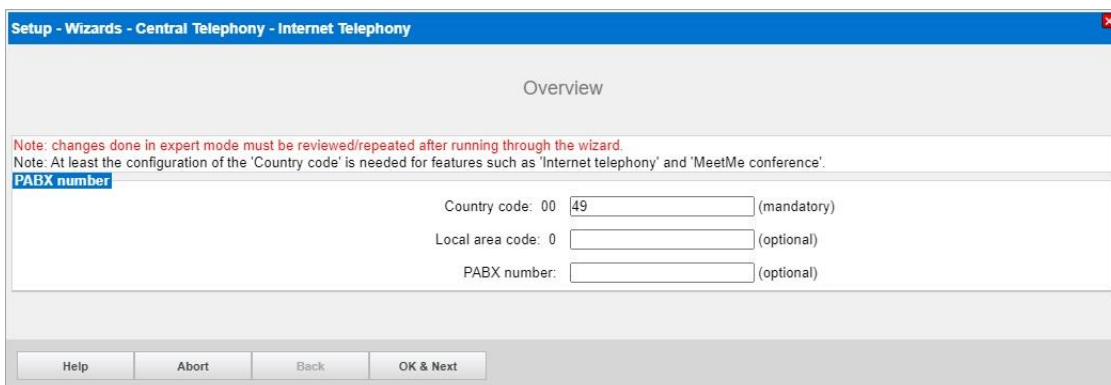


When using a DID based ITSP the call number configuration is defined by the Gateway location / PABX number together with the call numbers defined for the station.

The Gateway location will be configured in the Basic Installation Wizard



or in the Internet Telephony Wizard:

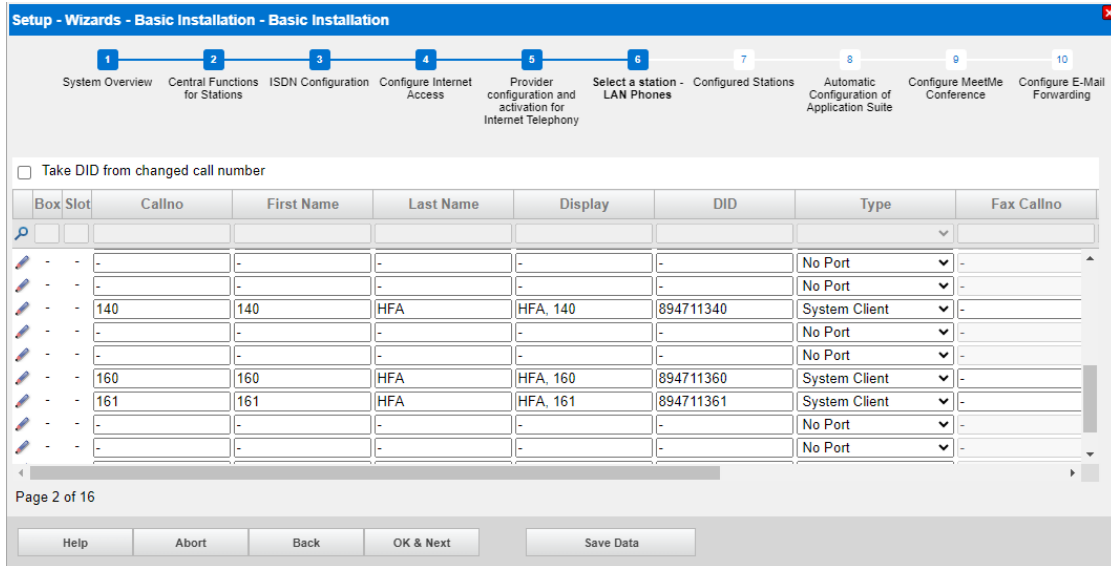


In case that Free- and/or mobile call numbers shall be used in parallel with the numbers assigned to the ITSP trunk, ONLY the Country code must be entered a location. The Local area code and the PABX number MUST be left empty.

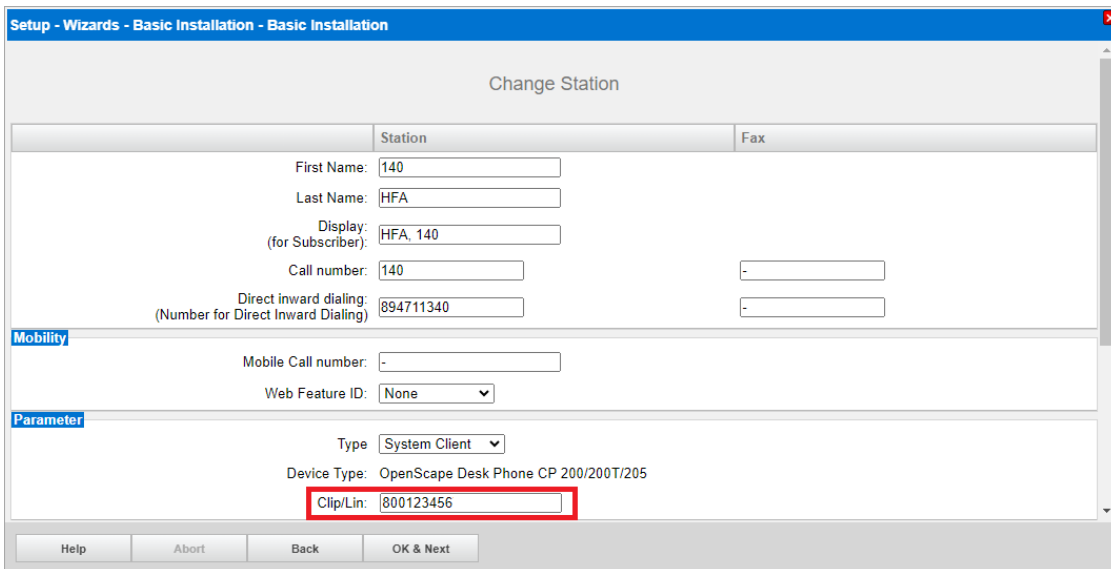
The remaining call number information must be filled in the Telephony/Subscriber Wizard.

Callno/Name: the internal call number and name of the station

DID: the number to reach the station from the public network (via ITSP trunk)



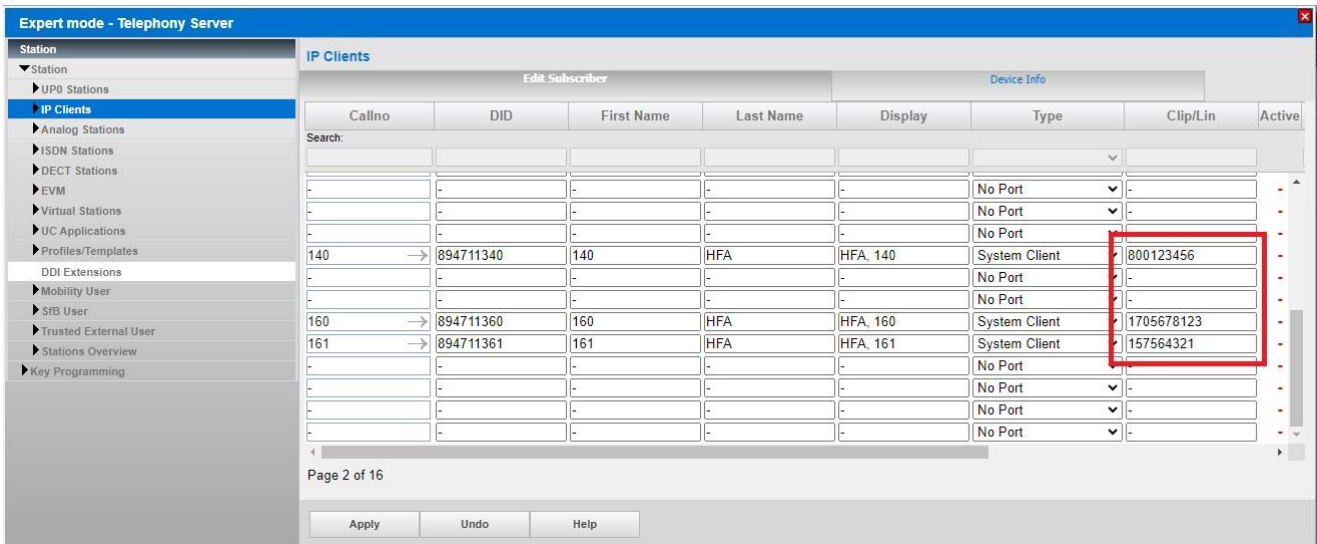
For entering the CLIP number the "Change Station"  page has to be opened



This has to be done for all stations in a similar manner.

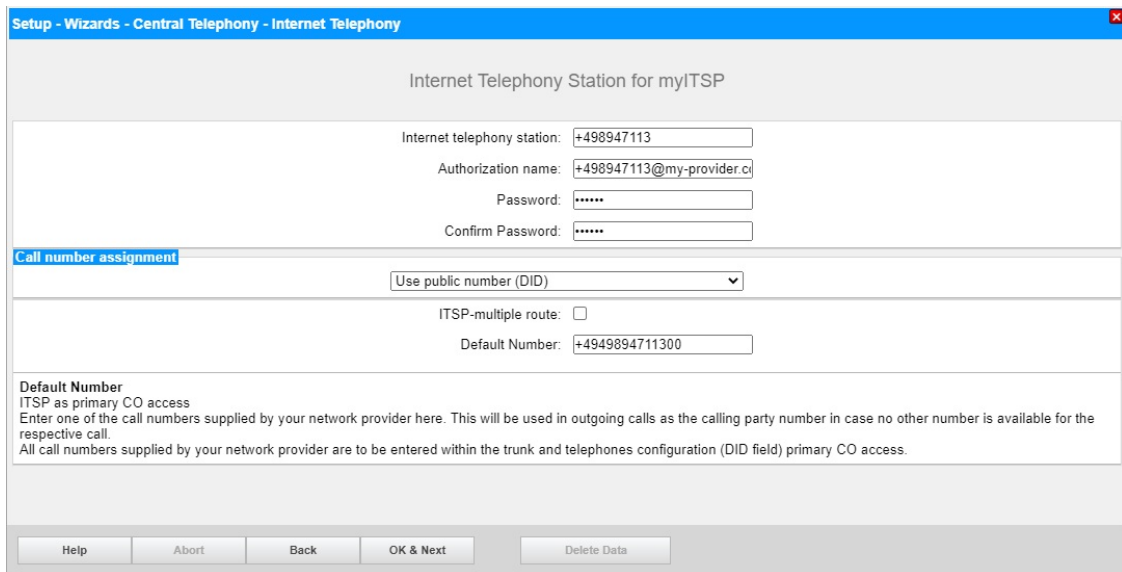
- If no CLIP is assigned, the DID number will be used as calling number for outgoing calls.
- If no CLIP/DID is assigned to a station the CLIP/DID of the Intercept position will be used instead.
- If none of these numbers is configured the Default number assigned to the ITSP trunk will be used.

Entering the CLIP number is possible in Expert mode as well:



2.1.2 ITSP Configuration

The CLIP no Screening feature is available for DID based ITSP trunks only. When configuring the Internet Telephony Station "use public number (DID)" MUST be selected:



In the "Default number" field a valid call number must be entered, which is used as a "trusted caller number" in the P-Asserted-Identity header field (e.g. intercept position DID number),

“CLIP no Screening support” has to be configured for the transmission of an appropriate DID in the P-Asserted-Identity header field:

Call number formatting

Incoming call - Called party number: To header user part

Incoming call - Calling party number: From header user part

Incoming call - Type of number (calling): automatic

Incoming call - Type of number (called): automatic

Outgoing call - Type of number (calling): automatic

Outgoing call - Type of number (called): automatic

Mapping of provider number: off

CLIP no Screening support: not supported

Call No. with international/national prefix: not supported

Called number in E164 format: CLIP in From / trusted number in PAI

Route optimization: Supported-No special treatment

MEX supported: no

Contact URI contains: call number:

TCP port used in Contact URI: ephem. src-port

The following settings are available in the ITSP profile:

- **“not supported”**
ITSP does not support CLIP no Screening. In group call / ringing group scenarios the “default number” is inserted into the PAI and/or PPI header field.
- **“CLIP in From / trusted number in PAI”**
ITSP allows an arbitrary “call number” in the From header field if the “default number” is inserted into the PAI and/or PPI header field.

```
INVITE sip:+49171987654@my-provider.com;user=phone;transport=tcp SIP/2.0
From: <sip:+49800123456@my-provider.com;user=phone>;tag=2cea5a7018
To: <sip:+49171987654@my-provider.com;user=phone>
P-Asserted-Identity: <sip:+49894711300@my-provider.com;user=phone>
```

- **“Supported - No special treatment”**
If ITSP allows an arbitrary “call number” in the From header field. In group call / ringing group scenarios the “default number” is inserted into the PAI and/or PPI header field, in all other cases the user’s DID.
- **“CLIP in From / DID in PAI”**
If ITSP allows an arbitrary “call number” in the From header field, the user’s DID number is inserted into the PAI and/or PPI header field.

```
INVITE sip:+49171987654@my-provider.com;user=phone;transport=tcp SIP/2.0
From: <sip:+49800123456@my-provider.com;user=phone>;tag=2cea5a7018
To: <sip:+49171987654@my-provider.com;user=phone>
P-Asserted-Identity: <sip:+49894711340@my-provider.com;user=phone>
```


2.2 CLIP forwarded calls

To make use of this feature your ITSP must support the transmission of the A-call number in the From: header field.

For certified ITSP's this setting is already available in the ITSP profile stored in the OpenScape Business system. In all other cases the parameter "Diversion: From contains original CallingPartyNumber" MUST be set.

If the ITSP supports the diversion header field, the "CLIP outgoing in Diversion header" parameters should be set to the specification of your ITSP.

CLIP / CLIR

CLIP outgoing in From header - display part:	omit
CLIP outgoing in From header - user part:	call number
Outgoing From Header - domain/host part:	domainName
Diversion: From contains original CallingPartyNumber:	<input checked="" type="checkbox"/>
Diversion: PAI contains original CallingPartyNumber:	<input type="checkbox"/>
CLIP outgoing in P-Asserted-Id header - display part:	omit
CLIP outgoing in P-Asserted-Id header - user part:	call number
CLIP outgoing in P-Preferred-Id header - display part:	omit
CLIP outgoing in P-Preferred-Id header - user part:	omit
CLIP outgoing in Diversion header - display part:	omit
CLIP outgoing in Diversion header - user part:	call number
CLIP outgoing in History-Info header - user part:	omit
CLIR outgoing in From header - display part:	anonymous
CLIR outgoing in From header - user part:	fully anonymous
CLIR outgoing Privacy header:	id
COLP / TIP supported for outgoing calls:	COLP supported

